

GENERAL NOTES

CONTRACTOR SHALL LOCATE PROPERTY LINES, RIGHTS-OF-WAY AND UNDERGROUND UTILITIES. PROTECT UNDERGROUND UTILITIES.

CONTRACTOR SHALL NOTIFY ENGINEER OF ANY AREAS WHERE UNACCEPTABLE SOILS, SINKHOLES, WET AREAS OR OTHER CONDITIONS ARE ENCOUNTERED WHICH MAY ADVERSELY AFFECT THE SITE. IF DIRECTED BY ENGINEER, REMOVE UNSUITABLE SOILS AND REPLACE THEM WITH ACCEPTABLE SOILS.

EARTH AND ROCK WORK IS UNCLASSIFIED. NO EXTRA PAYMENT WILL BE MADE FOR ROCK EXCAVATION.

CONTRACTOR SHALL MAKE MINOR ADJUSTMENTS IN GRADING PLAN AS NECESSARY TO PROVIDE FOR SMOOTH TRANSITION FOR EXISTING ENTRANCES.

THE CONTRACTOR SHALL ESTABLISH EROSION CONTROL MEASURES BEFORE DISTURBING SITE.

THE CONTRACTOR MUST TAKE NECESSARY ACTION TO MINIMIZE TRACKING OF MUD ONTO PAVED ROADWAY FROM CONSTRUCTION AREAS. THE CONTRACTOR SHALL DAILY REMOVE MUD/SOIL FROM PAVEMENT, AS MAY BE REQUIRED.

THE CONTRACTOR MUST PROVIDE TRAFFIC CONTROL IN ACCORDANCE WITH THE MANUAL FOR UNIFORM TRAFFIC CONTROL DEVICES AND THE KENTUCKY DEPARTMENT OF HIGHWAYS GUIDANCE MANUAL.

THE CONTRACTOR MUST MAINTAIN ACCESS TO EXISTING BUSINESSES AND EXISTING ROADS.

ALL EARTHWORK TO COMPLY WITH KENTUCKY DEPT. OF HIGHWAYS (KY-DOH SECTION 400) SPECIFICATIONS FOR ROAD AND BRIDGE CONSTRUCTION, EDITION OF 2000 AND ANY AMENDMENTS.

CONTACTS:

WATER AND SEWER

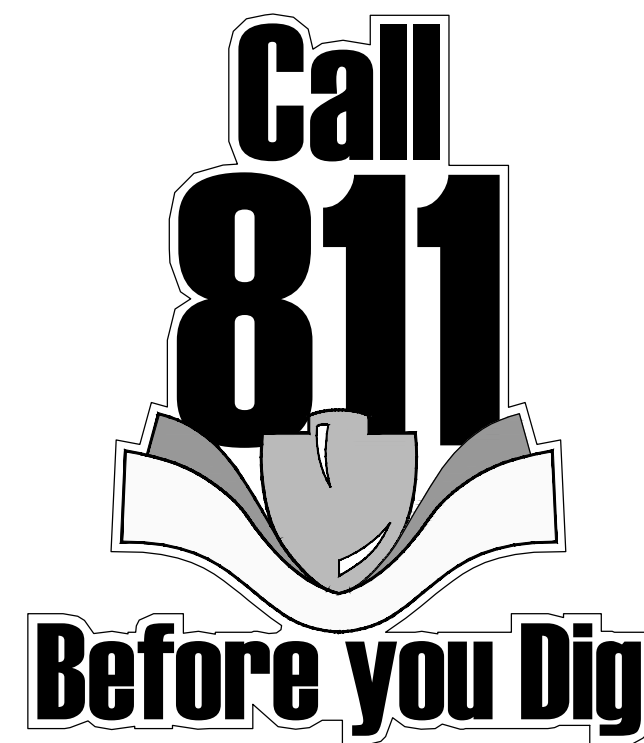
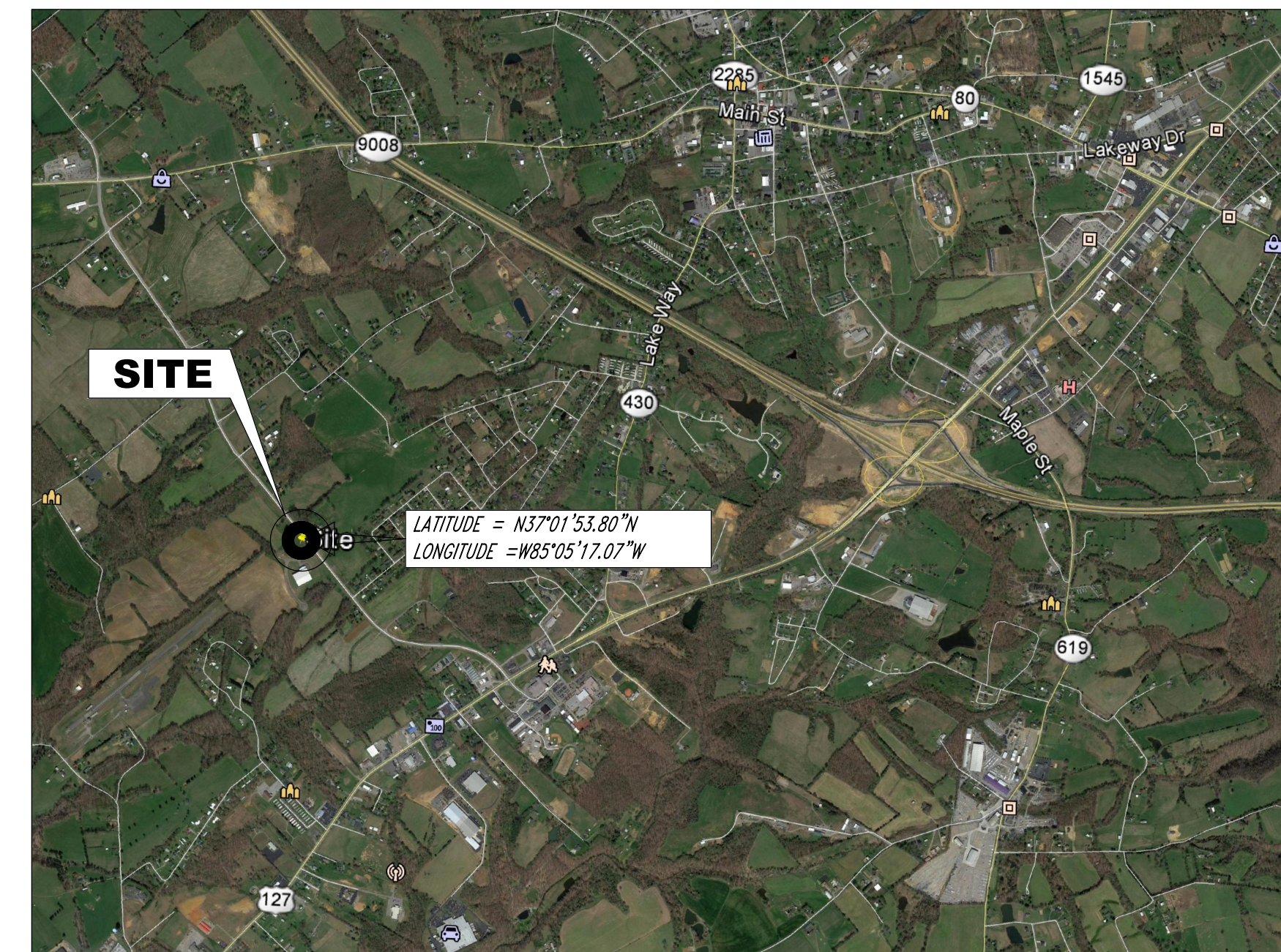
CITY OF RUSSELL SPRINGS
P.O. BOX 247
RUSSELL SPRINGS, KY 42642
(270)-866-3981
TERRY RUSSELL
trussell@duocounty.com

NATURAL GAS

LAKE CUMBERLAND NATURAL GAS AUTHORITY
42 UTILITIES DRIVE
RUSSELL SPRINGS, KY 42042
TERRY RUSSELL
(270) 866-3981

ELECTRIC

SOUTH KY RECC
200 ELECTRIC AVENUE
SOMERSET, KY
KEVIN NEWTON, ENGR. MANAGER
(606) 678-4121



GENERAL NOTES
LOT 6 SITE PREPARATION
FRENCH VALLEY BUSINESS PARK
RUSSELL COUNTY INDUSTRIAL DEVELOPMENT AUTHORITY
RUSSELL SPRINGS, KENTUCKY

DATE	REVISION	BY

PROJECT NO. 2078-26	DESIGNED BY G.A.R.
DRAWN BY J.D.W.	CHECKED BY G.A.R.
REVIEWED BY G.A.R.	DATE AUGUST, 2018
SCALE AS NOTED	

Engineers
Architects
Planners

624 Wellington Way
Cincinnati, OH 45203
www.mseinc.com

Phone: (659) 223-5694
Fax: (659) 223-2607

DRAWING NO.
GN
SHEET OF